

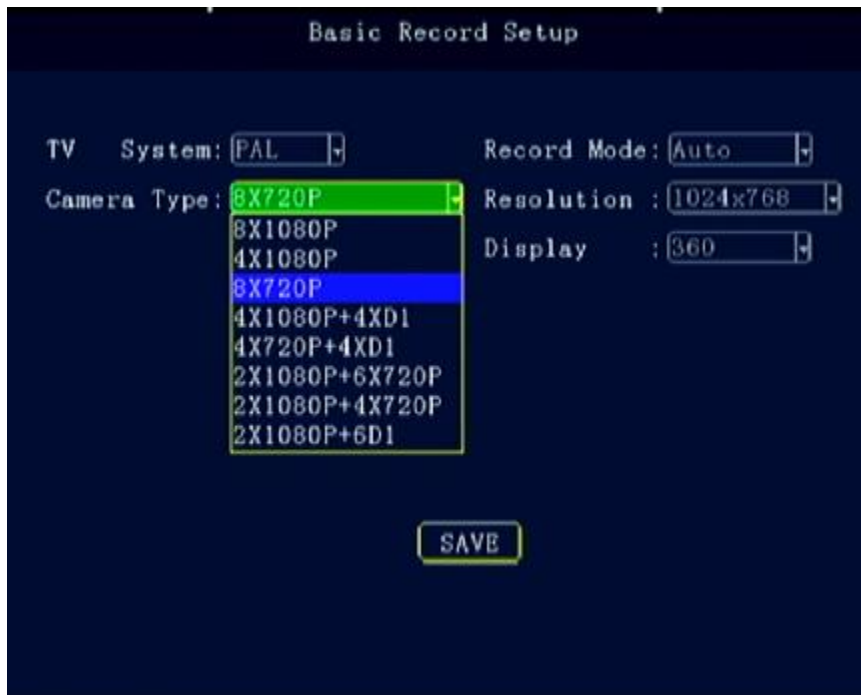
Model No.: WP-AHD9804

4CH 1080P/8CH 1080 HD HHD Mobile DVR



Main Features

H.264 Compression, support 8CH 720P AHD input/ 8CH non-real time 1080P AHD input,4ch real time 1080P AHD input, and support multi-channel mixed input, as following picture.



Product Features:

- ◆ HIS Solution,H.264 Compression, Multiple stream recording, support 8ch 720P ahd input/ analog standard definition Camera input/4ch real-time 1080P AHD input/8ch non real-time 1080P AHD input
- ◆ High quality real time recording, 1080P/960P/720P/CIF/HD1/D1 Optional, quality adjustable;
- ◆ Professional Car Power Design,8-36V wide voltage,Provide reverse voltage/overload/short circuit protection, to meet kinds of car application;
- ◆ Support 12VDC/3Amp output voltage,power supply for Camera/Screen etc;
- ◆ Max 2TB HDD + 128GB SD Card Mirror Recording,protect DVR from shock & Dust damage;
- ◆ Exclusive pre-allocate DVR Special File System Technology,Solving repeatedly wipe cause file fragmentation, and ensure the integrity of the data.
- ◆ ACC Delay off,can set 24 hours;
- ◆ Unique UPS Technology ensures the integrity of record when power failure occurs,even can for 10-15s.
- ◆ Auto Record/Manual Record/Alarm Record etc working mode to meet different requirements;
- ◆ Show Car status/Plate/Driving Route/Low Speed/Over Speed information for convenient management;
- ◆ Support GPS/BD,3G/4G Module Optional,WIFI extend;

- ◆ Strong Network,device configure via IE Web,
- ◆ Support Monitoring,Intercom, PTZ, Alarm,Over speed etc through remote control platform;
- ◆ 4ch Alarm input(Door Open,Light,Turn direction,brake,reverse etc),can linkage kinds of alarm;
- ◆ 2CH Alarm Output,Support Light and Sound alarm sensor,Oil/Power cut off;
- ◆ High level aviation interface,easily installation and better shockproof, more stable;
- ◆ Easily Smart GUI Interface, saving time in device setting;
- ◆ Strong Stable Application,Support Real-time monitor, talk-back,playback,record,picture snap etc;
- ◆ Updated through SD or Remote Automatic updating,more stable and convenient;
- ◆ Support Phone Remote Monitor,3G Phone Calling etc;
- ◆ Support PTZ/Oil Sensor/LED Advertisement Panel etc;
- ◆ Support Ministry of Transport Standard Agreement
- ◆ Be Customized according your request;

Specification

Item		specification
OS		Linux
Language		Chinese/English/Others (can be customized)
Video Compression		H.264
OSD		Overlays information such as date time and vehicle ID
GUI	Graphical User Interface	Can connect to external LED screen. Setup system parameters with the remote control
Video Record System	Video Input	4ch 1080P AHD input, avigation Plug, 1.0Vp-p, 75Ω 8ch 1080P input 8ch 720P input 2ch1080P+6D1 input 2ch 1080P+6ch 720P input 2ch 1080P+4ch 720P input 4ch 1080P+4ch D1 input 4ch 720P+4ch D1 input
	Video Output	2CH video output (1CH AV video, VGA output for optional.)
	Preview	Support 1 channel and 4 channels/9channel preview., support Manual/Alarm Trigger full screen preview
	Resolution	Support 1080P/960P 720P/D1/CIF, MAX:8channel 1080P
	Video Quality	0-7 levels, 0 is the highest level, 7 is the lowest level

	Video Standard	PAL: 100f/s , CCIR625 line,50field; NTSC: 120f/s, CCIR525 line,60field; CIF: 256Kbps ~ 1.5Mbps, multi levels video quality optional; HD1: 600Kbps ~ 2.5Mbps, multi levels video quality optional; D1: 800Kbps ~ 3Mbps, multi levels video quality optional; 720P : 1Mbps~4Mbps, multi levels video quality optional; 1080P: 1Mbps~8Mbps, multi levels video quality optional;
	Record Mode	The default setting is auto recording after power on. Timed recording, alarm trigger recording and manual recording are supported
Audio	Audio Input	4/8 channel avigation Plug
	Audio Output	1channel
	Compression	G.726 compression, 8KB/s speed
Alarm Input		4CH IO Alarm Input, Support alarm linkage function
Alarm Output		2CH Relay Alarm Output, Support the linkage acousto-optic alarm, cut off fuel oil/power,etc
Communication Interface		1CH RS232, support extension device, such as POS machine, Oil Fuel sensor, LED advertising screen , etc. 1CH 485 interface, can connect PTZ,etc.
Wireless transfer		Support Built-in 3G network, WCDMA,CDMA2000,TD-SCDMA compatible with GPRS,EDGE; Support Built-in 4G network, TTD-LTE, FDD-LTE
Position		Support Built GPS/BD Module,can make playback analysis of vehicle routing
G-sensor		Support G-sensor
Video Storage	Storage	2.5" HDD+ SD Card ,each max 2TB HDD + 128GB SD Card mirror recording to protect data from loss
	Upgrade	Support USB flash disk updating SD card upgrade , OTA remote upgrade automatically
	File Format	H.264
	File System	Special Car system File System
	USB	Front panel supports USB port, support USB flash disk upgrade to backup; hard disk box USB port, can back up video data
Video Playback	Video Search	Search video by Record Time/Record Type etc
	Playback	Max support 4CH/8CH Replay /Stop/Fast Forward/Fast Reverse at same time Support x 2,x4,x8,x16. fast forward or fast backward play
Voltage &Power Consumption	Power Management	Adaptive wide power input, support Wide Voltage, Over-load、 Over-voltage、 Short Circuit、 Reverse Protection..Support Time Setting/Delay power off
	Voltage Input	DC:+8V ~ +36V
	Voltage Output	+12V@2.5A
	Power Consumption	Normal Working <5W
Working	Temperature	-20℃ to +70℃

Environment	Humidity	20% to 80%
Safety Management	Safety enter	user/Admin 2 Levels Different Passwords ,
others	Size	225 (D) * 187 (W) * 62 (H) mm
	Net Weight	2.5 Kg

Ø Specifications are subject to change without prior notice